

CARING CARDS



Creating conversations

for healthy minds



HEALTHSERVE

healing, inspiring & bridging communities



We believe in a society where every migrant worker lives a life of dignity.

When was the last time you had a thoughtful conversation with someone you cared about?

With these Caring Cards, we hope to bridge the gaps where words fail, and start having more conversations about mental health.



If you know of a migrant worker who requires assistance, please reach out to HealthServe:

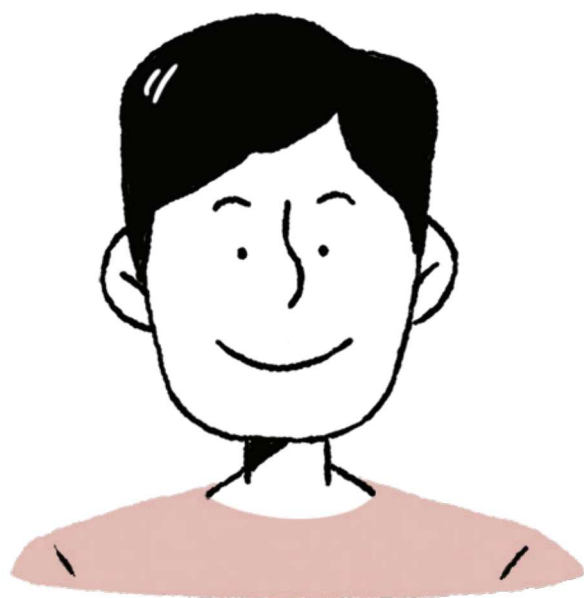
+65 3129 5000
(24-hour helpline)

In support of

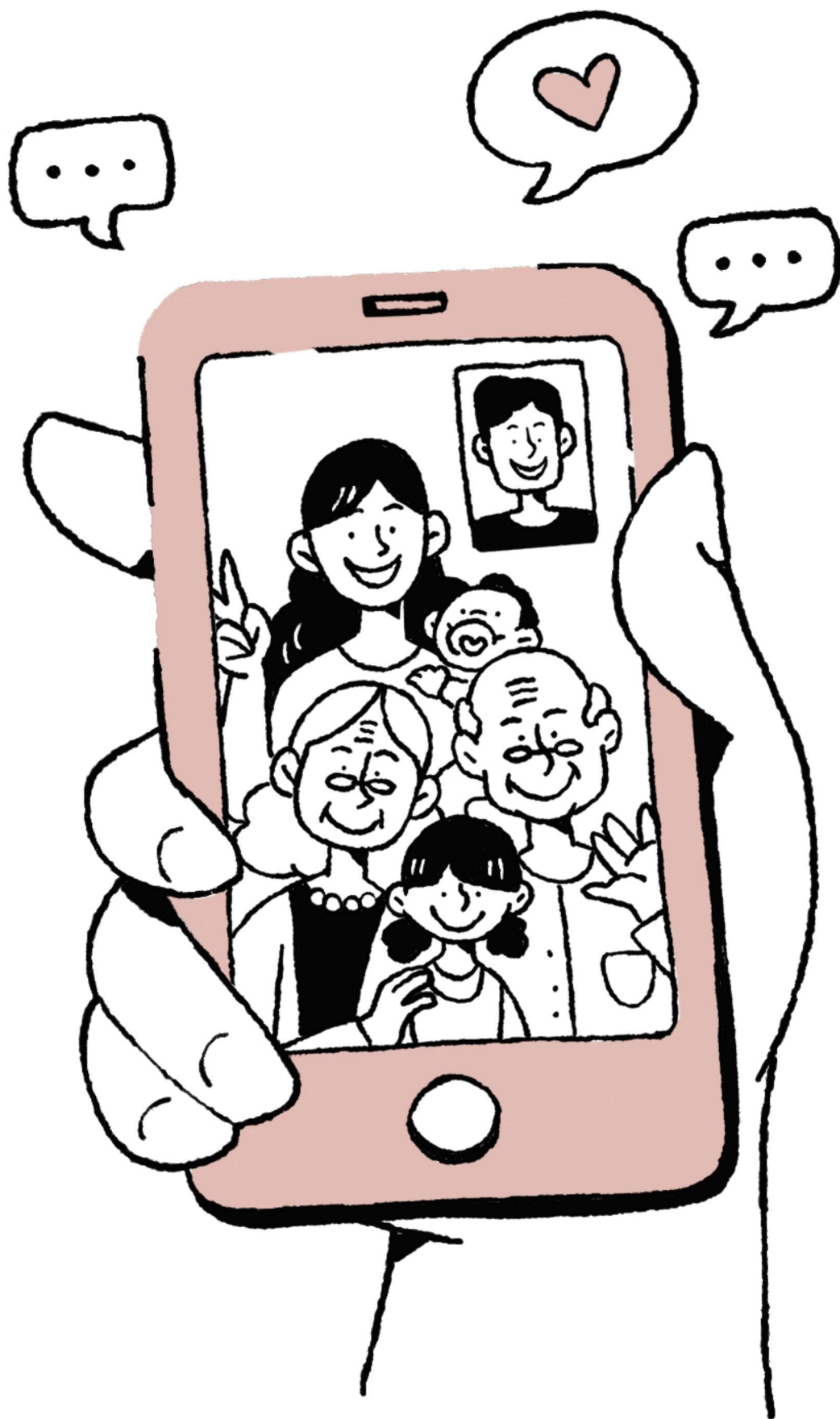




C A R I N G C A R D S



C A R I N G C A R D S



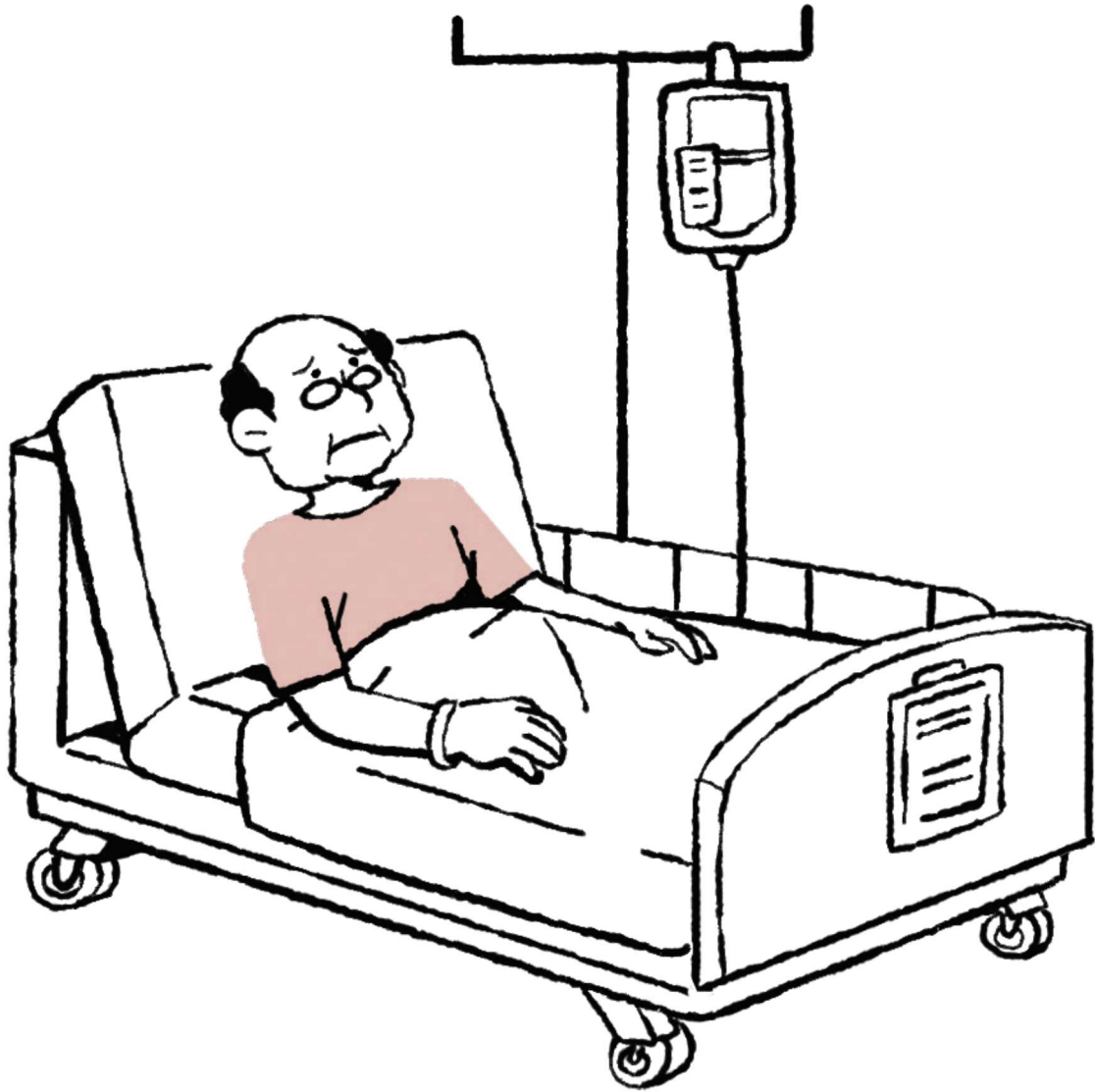
C A R I N G C A R D S



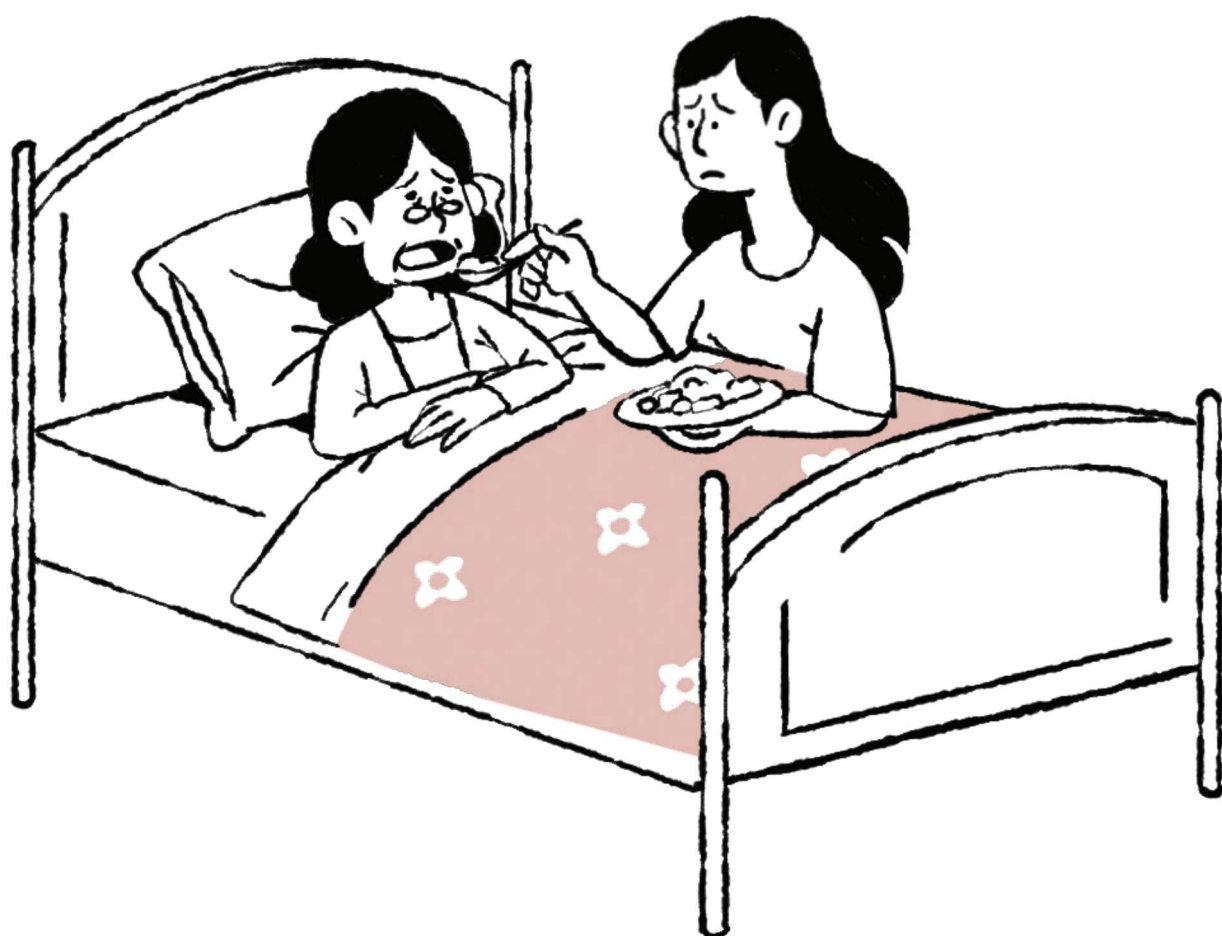
C A R I N G C A R D S



C A R I N G C A R D S



C A R I N G C A R D S



C A R I N G C A R D S



C A R I N G C A R D S



C A R I N G C A R D S



C A R I N G C A R D S



C A R I N G C A R D S



C A R I N G C A R D S



C A R I N G C A R D S



C A R I N G C A R D S



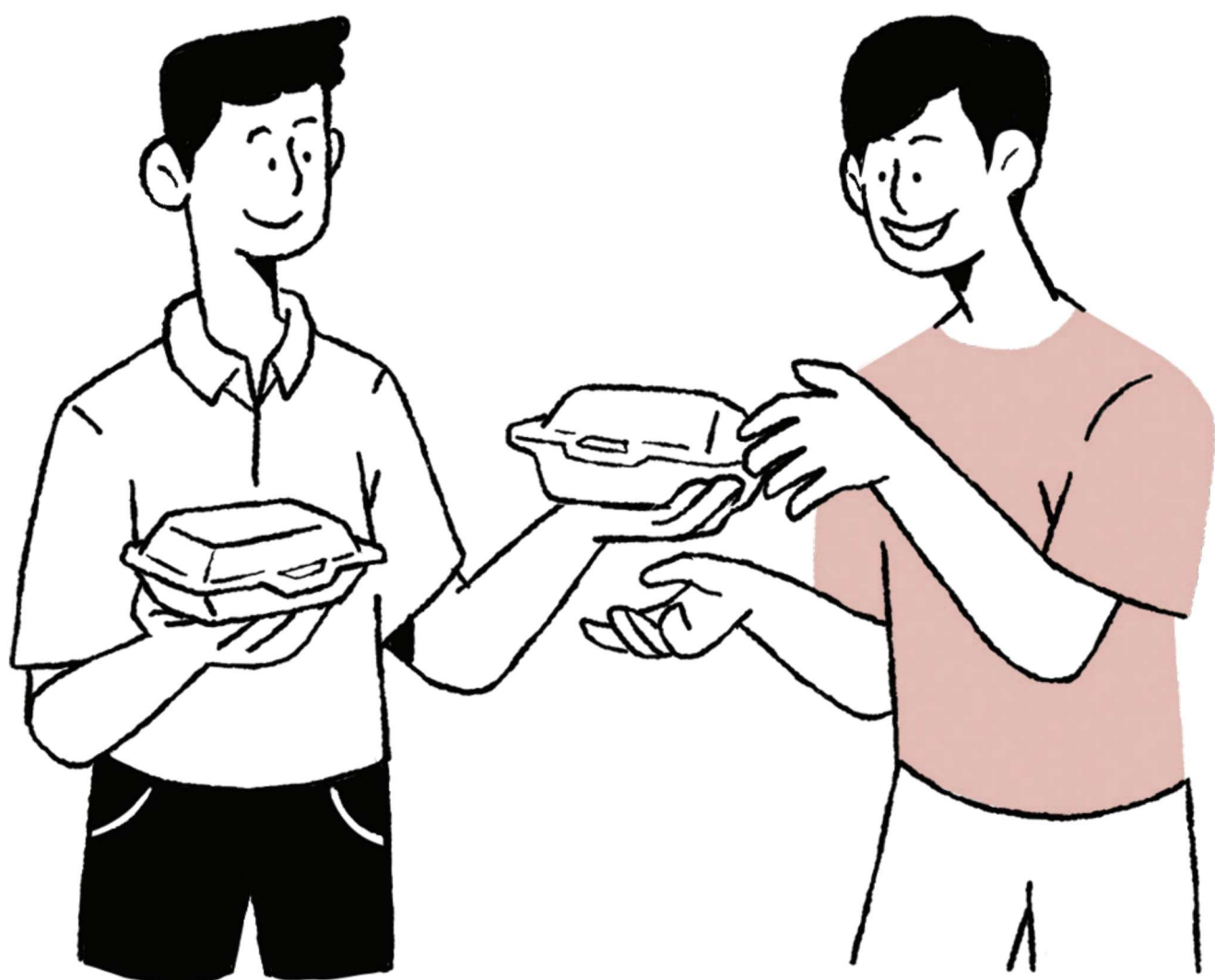
C A R I N G C A R D S



C A R I N G C A R D S



C A R I N G C A R D S



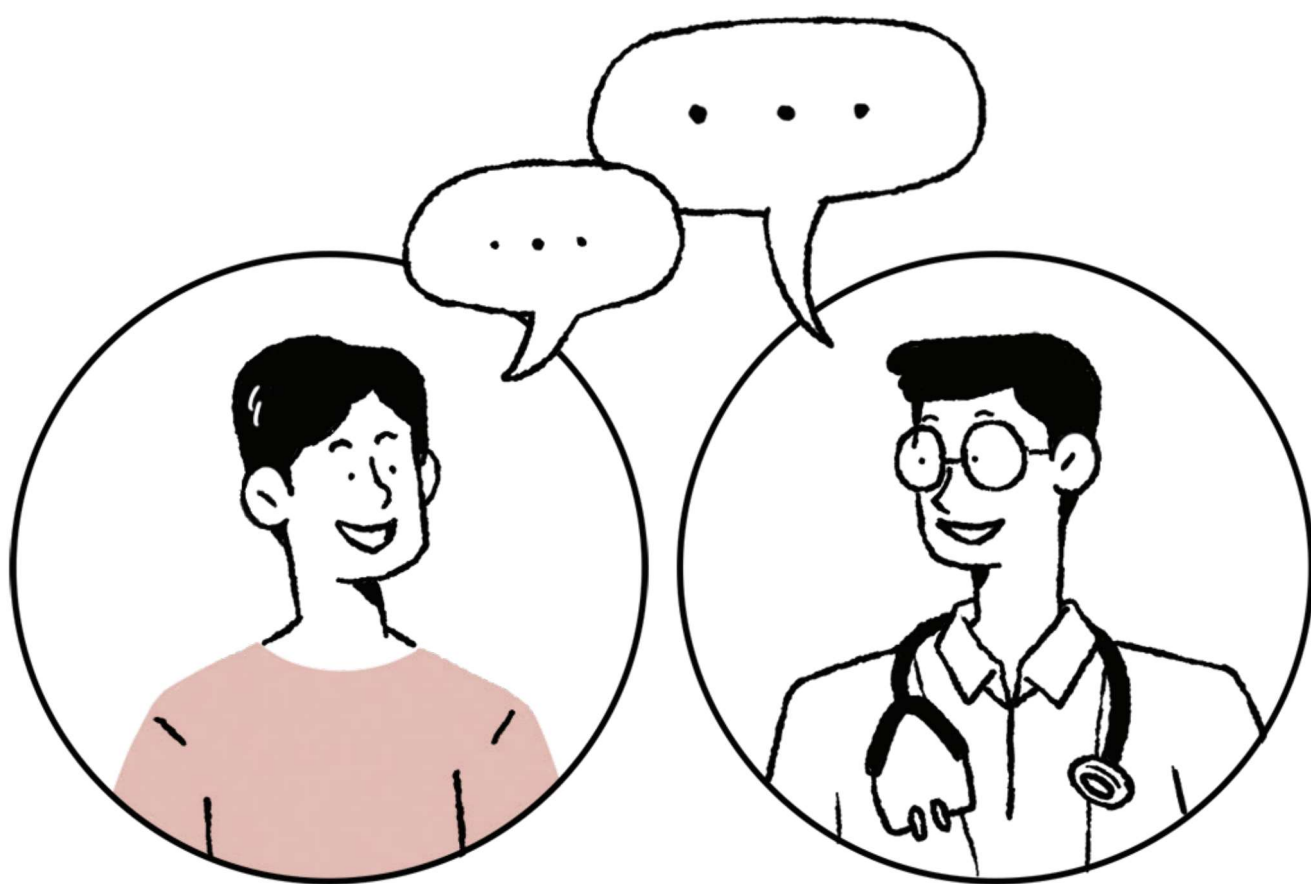
C A R I N G C A R D S



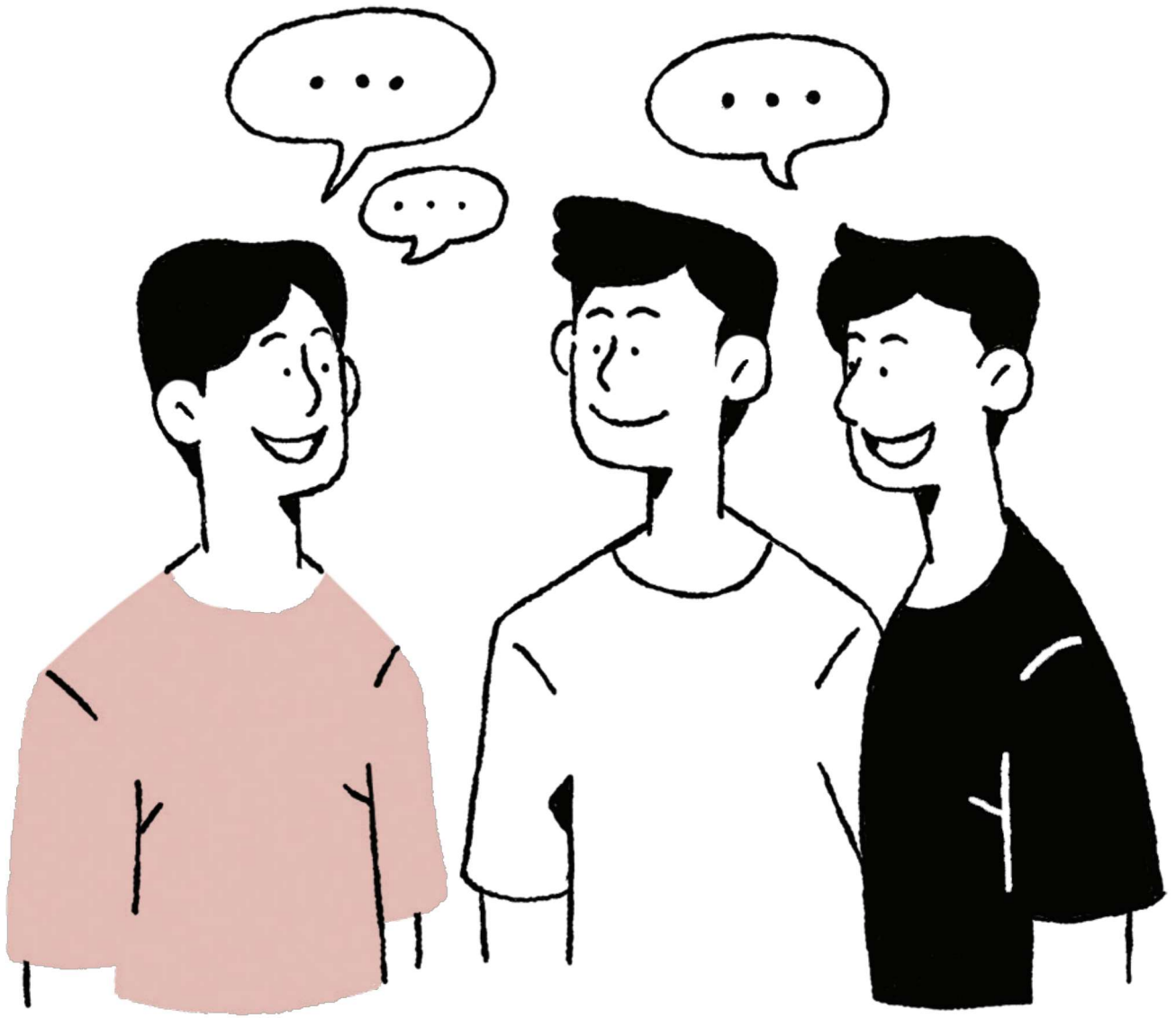
C A R I N G C A R D S



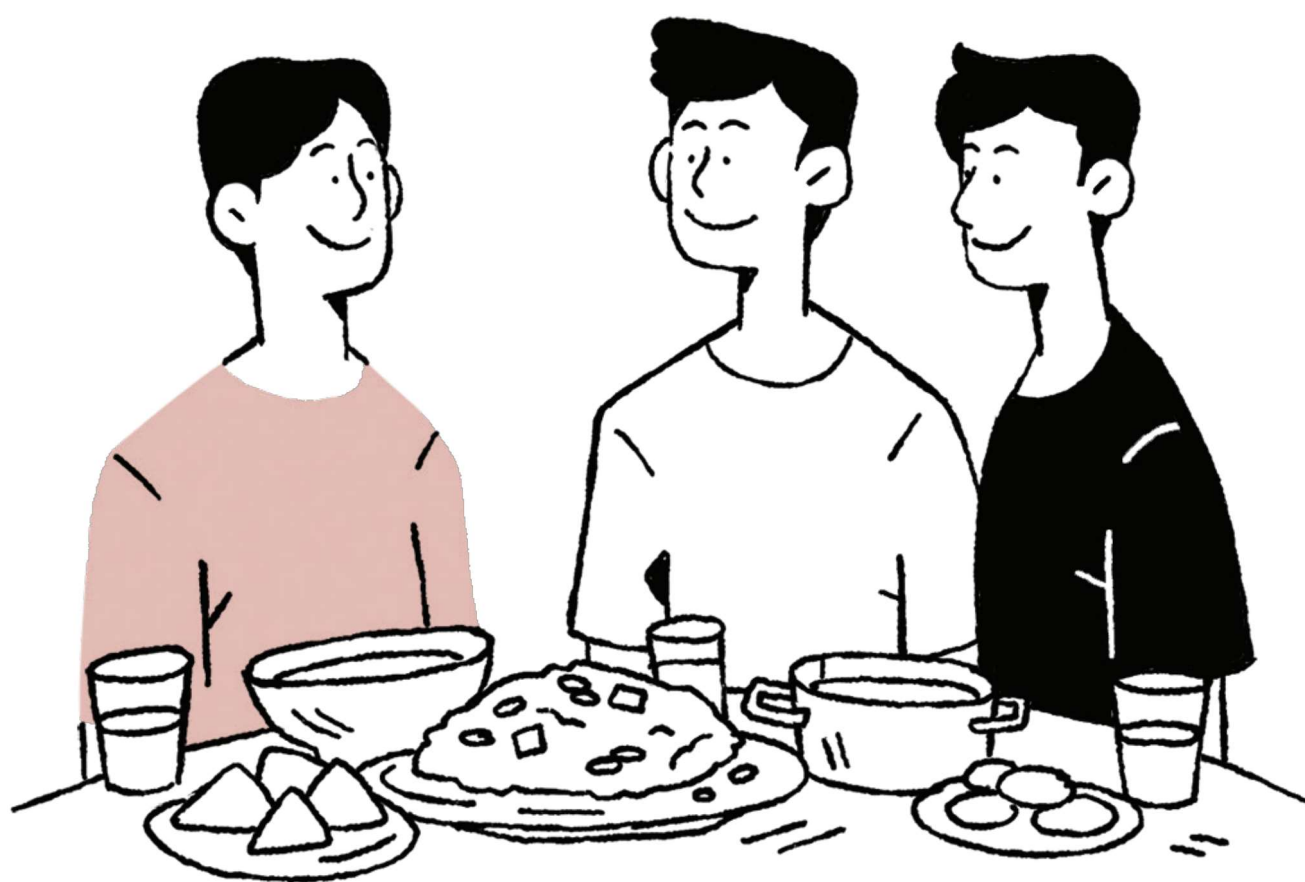
C A R I N G C A R D S



C A R I N G C A R D S



C A R I N G C A R D S



C A R I N G C A R D S



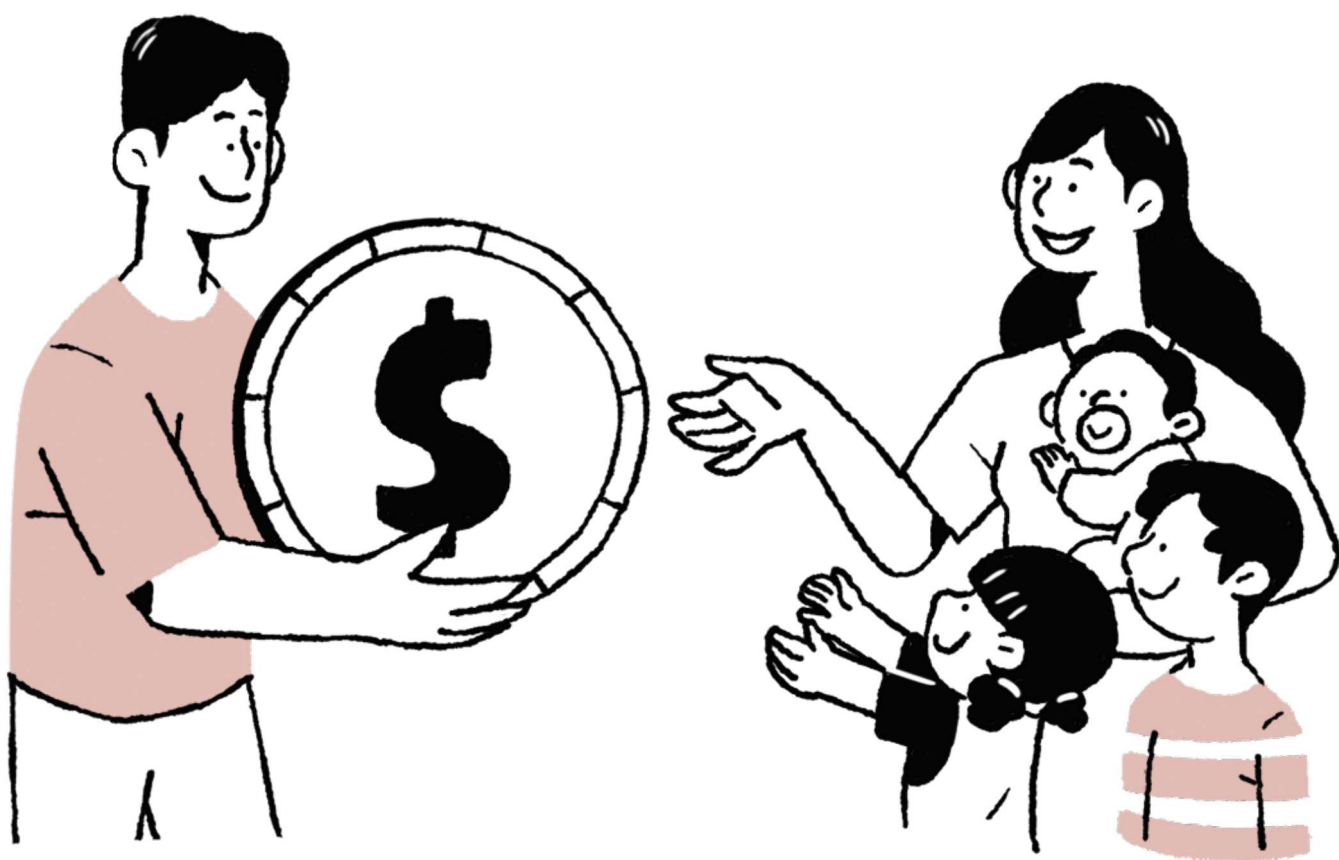
C A R I N G C A R D S



C A R I N G C A R D S



C A R I N G C A R D S



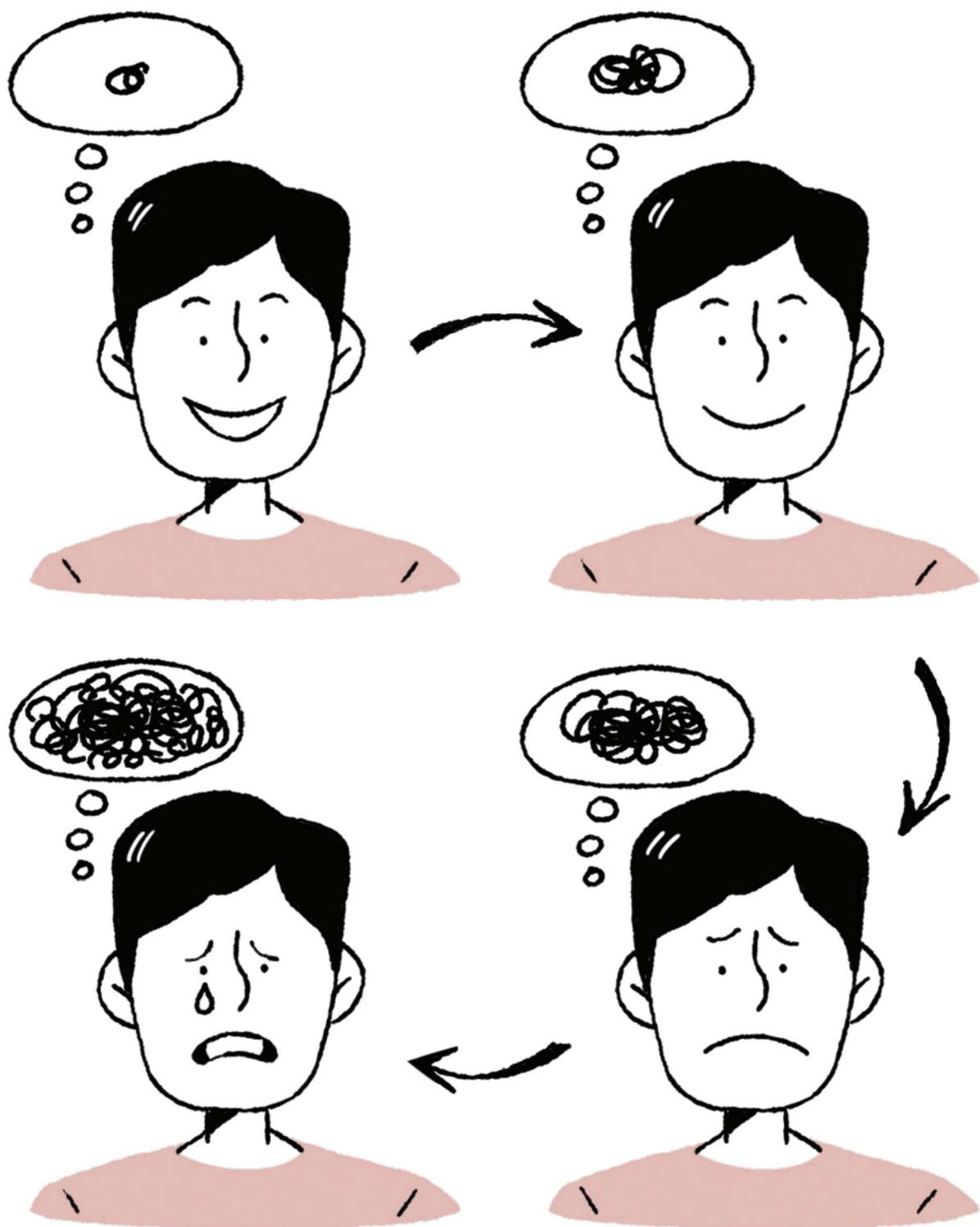
C A R I N G C A R D S



C A R I N G C A R D S



C A R I N G C A R D S



C A R I N G C A R D S